

Model Number:
OWC6034QC


PROVIDING A BETTER CLIMATE ANYWHERE.



5 Ton Deluxe Portable Water-Cooled Air Conditioner

Product Features:

- Solid State Electronic Controller
- Manual or Auto 6-Speed Fan Control
- Large LED Display
- Swivel Ball Bearing Casters with Locking Fronts
- Internal Condensate Pump with Overflow Alert
- Water Regulating Valve
- High Pressure Safety Switch
- Washable Electrostatic Air Filter
- Three Phase Monitor

Technical Specifications:

Specifications subject to change without notice

Cooling Capacity:	60,100 BTUH
Voltage:	460V, 60Hz, 3PH
Amps:	6.3
Total Watts:	5000
Cooling Ambient:	Operating Range 65° to 105°
Outdoor Use:	No
Cooling Capacity:	Total BTUH at 80°DB/67°WB Return air with 85°EWT and 105° LWT.
In Rush Amps:	75
Plug Type:	L16-20P
EER:	12.0
NOTE: Dedicated circuit and time delay fuses / circuit breakers are recommended.	

Compressor:	Scroll
Compressor HP:	5
Compressor LRA:	62

EVAP CFM - High:	1950
EVAP Motor HP:	1

Water Line Connections	
Water In:	3/4 QC
Water Out:	3/4 QC
Drain:	3/8 QC

Condensate Removal:	Pump Automatic 20' Vertical Lift
---------------------	-------------------------------------

Refrigerant Charge:	52 oz R-410A
---------------------	--------------

Height:	53.2"
Width:	28.2"
Depth:	29.2"
Net Weight:	410 lbs.

Estimated Condenser Water Usage*

Entering Water Temp:	
Condensing Water at 60°:	3.8 GPM
Condensing Water at 85°:	15 GPM

* Condenser Water Usage is base on 80/67 Ambient, and incoming water temperatures as shown. Usages will vary with water conditions and ambient temperatures.

847.583.0311
oceanaire-inc.com

PROUDLY MADE IN THE
USA



PROVIDING A BETTER CLIMATE ANYWHERE.

Optional Accessories



Quick-Connect Hose Kit/ 40 Foot

Part Number: HK-6QC Designed for use with OceanAire portable water-cooled air conditioners equipped with quick-connect fittings.

Hose kit consists of three hoses:

Water-In Hose, Water-Out Hose and Drain Hose.

The Water-In (5/8" QC BLACK) and Water-Out (5/8" QC RED)hoses are made of reinforced PVC tubing.

The Drain (3/8" QC YELLOW) hose is made of gray reinforced PVC and is used to route the condensate pump discharge to a drain.



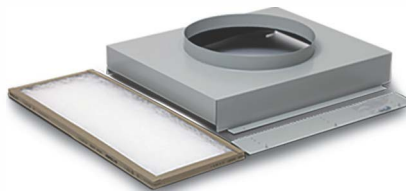
Hose Adapter

Part Number: HA-LGQC
Quick connect transition to garden hose connection



Discharge Duct Adapter

For extended duct length
Part Number: 2DDA-16



Evaporator Return Air Plenum

For ducting return air
Part Number: DEP-16



Nozzle Kit / 2 x 6"

For directional cooling
Part Number: 2NK-3



PROVIDING A BETTER CLIMATE ANYWHERE.

OceanAire, Inc.
1731 Wall Street, Suite 100
Mount Prospect, Illinois 60056

OA-TS-OWC6034QC-01.03.22

847.583.0311
oceanaire-inc.com

PROUDLY MADE IN THE
USA