

Model Number:
2OACH6032



PROVIDING A BETTER CLIMATE ANYWHERE.



**HEATING &
COOLING**



5 Ton Deluxe Portable Heat Pump

Product Features:

- Solid State Electronic Controller
- Automatic Mode Changeover
- Manual or Auto 6-Speed Fan Control
- Large LED Display
- Swivel Ball Bearing Casters with Locking Fronts
- Condensate Overflow Alert
- High Pressure Safety Switch
- Three Phase Monitor
- Washable Electrostatic Air Filters

Technical Specifications:

Specifications subject to change without notice

| | |
|--|---|
| Cooling Capacity: | 60,100 BTUH |
| Heating Capacity: | 53,500 BTUH |
| Voltage: | 208-230V, 60Hz, 3PH |
| Amps: | 20.4 |
| Total Watts: | 6000 |
| Cooling Ambient: | Operating Range 65° to 105° |
| Heating Ambient: | Operating Range 40° to 85° |
| Outdoor Use: | No |
| Cooling Capacity: | Total BTUH at 80°DB/67°WB Return Air 95°F Outdoor at High Fan Speed. |
| Heating Capacity: | Total BTUH at 70°DB/60°WB Indoor, 47°DB/43°WB Outdoor |
| In Rush Amps: | 162 |
| Plug Type: | L15-30P |
| EER: | 10.0 |
| NOTE: Dedicated circuit and time delay fuses / circuit breakers are recommended. | |
| Compressor: | Scroll |
| Compressor HP: | 5 |
| Compressor LRA: | 137 |
| EVAP CFM - High: | 1950 |
| EVAP Motor HP: | 1 |
| COND CFM | 2200 |
| COND MOTOR HP | 1 |
| Condensate Removal: | Pump Automatic 20' Vertical Lift |
| Refrigerant Charge: | 80 oz R-410A |
| Height: | 54.2" |
| Width: | 28.2" |
| Depth: | 41.0" |
| Net Weight: | 485 lbs. |

847.583.0311
oceanaire-inc.com

PROUDLY MADE IN THE
USA

Accessories for:
2OACH6032



Optional Accessories



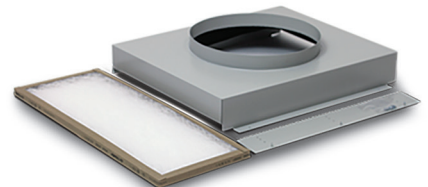
Ceiling Panel Kit

For discharging the condenser
air above a drop ceiling
Part Number: CK-16



Nozzle Kit / 2 x 8"

For directional cooling
Part Number: 2NK-3



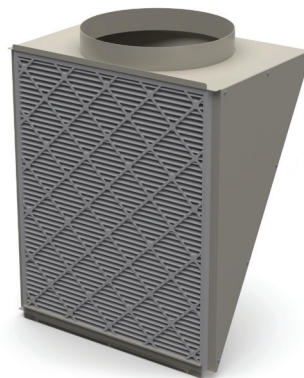
Evaporator Return Air Plenum

For ducting return air
Part Number: DEP-16



Discharge Duct Adapter

For extended duct length
Part Number: 2DDA-16



Condenser Return Air Plenum

For installations where it is
required to duct air to the
inlet of the condenser.
Part Number: DCP-5



OceanAire, Inc.
1731 Wall Street, Suite 100
Mount Prospect, Illinois 60056

OA-TS-2OACH6032-06.13.22

847.583.0311
oceanaire-inc.com

PROUDLY MADE IN THE
USA